

# C-MINOR ETUDE

SWING ♩ = 160

D MIN



G MIN

D MIN



B<sup>b</sup>7

A<sup>7</sup>

D MIN



D MIN



# C-MINOR ETUDE

SWING ♩ = 160

C MIN

First staff of music in bass clef, 4/4 time signature. It begins with a C minor key signature (two flats). The melody consists of eighth and quarter notes, including a triplet of eighth notes in the fourth measure. The staff ends with two accented eighth notes.

F MIN

C MIN

Second staff of music in bass clef, 4/4 time signature. It continues the melody with eighth and quarter notes, featuring a triplet of eighth notes in the second measure and a flat sign in the fifth measure.

A<sup>b</sup>7

G<sup>7</sup>

C MIN

Third staff of music in bass clef, 4/4 time signature. It continues the melody with eighth and quarter notes, including a triplet of eighth notes in the fourth measure and an accented eighth note in the fifth measure.

C MIN

Fourth staff of music in bass clef, 4/4 time signature. It concludes the piece with a few final notes and a double bar line.

# C-MINOR ETUDE

SWING ♩ = 160

C MIN



F MIN

C MIN



A<sup>b7</sup>

G<sup>7</sup>

C MIN



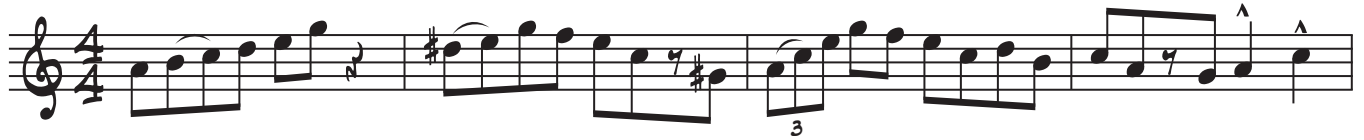
C MIN



# C-MINOR ETUDE

SWING ♩ = 160

A MIN



D MIN

A MIN



F 7

E 7

A MIN



A MIN



# C-MINOR ETUDE

SWING ♩ = 160

G MIN

C MIN

G MIN

E<sup>b</sup>7

D<sup>7</sup>

G MIN

G MIN